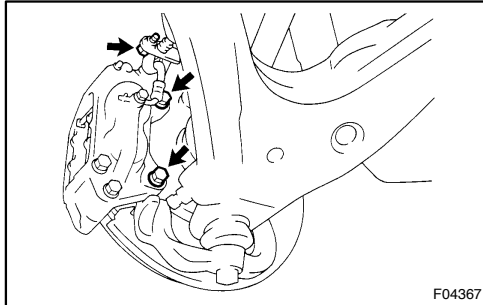


REMOVAL

1. REMOVE FRONT WHEEL

Torque: 131 N·m (1,340 kgf·cm, 97 ft·lbf)



2. REMOVE BRAKE CALIPER

(a) Remove the bolt and disconnect the flexible hose from the steering knuckle.

Torque: 28 N·m (290 kgf·cm, 21 ft·lbf)

(b) Remove the 2 bolts, washers and brake caliper.

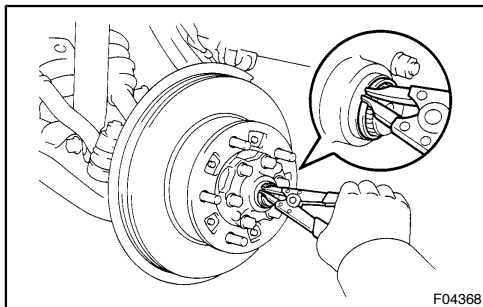
Torque: 123 N·m (1,250 kgf·cm, 91 ft·lbf)

(c) Support the brake caliper securely.

3. REMOVE SNAP RING

(a) Using a screwdriver and hammer, remove the grease cap from the flange.

(b) Using snap ring pliers, remove the snap ring.



4. DISCONNECT ABS SPEED SENSOR AND WIRE HARNESS

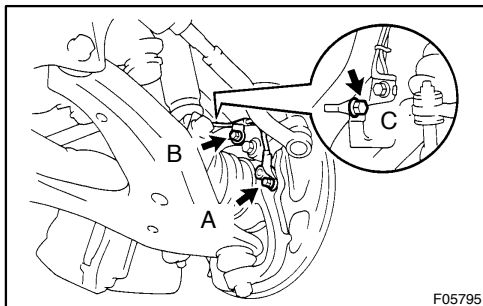
Remove the 3 bolts and disconnect the ABS speed sensor and wire harness.

Torque:

A: 8.0 N·m (82 kgf·cm, 71 in·lbf)

B: 13 N·m (130 kgf·cm, 10 ft·lbf)

C: 28 N·m (290 kgf·cm, 21 ft·lbf)



5. DISCONNECT STEERING KNUCKLE ARM

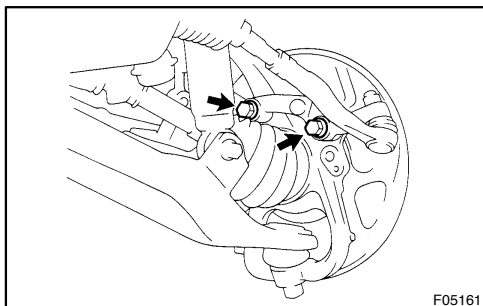
Remove the 2 bolts and disconnect the steering knuckle arm.

Torque: 147 N·m (1,500 kgf·cm, 108 ft·lbf)

HINT:

At the time of installation, please refer to the following items.

- Clean the threads of the 2 bolts and steering knuckle with toluene or trichloroethylene.



- Apply sealant to the 2 bolt threads.

Sealant:

**Part No. 08833-00070, THREE BOND 1324
or equivalent**

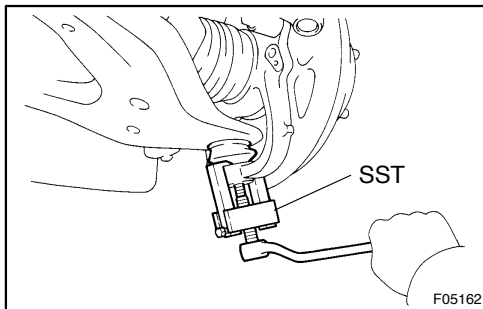
6. DISCONNECT STEERING KNUCKLE FROM LOWER SUSPENSION ARM

- (a) Remove the cotter pin and nut.

Torque: 159 N·m (1,625 kgf·cm, 117 ft·lbf)

HINT:

At the time of installation, if the holes for the cotter pin are not aligned, tighten the nut further up to 60°.



- (b) Using SST, disconnect the steering knuckle from the lower suspension arm.

SST 09628-6201 1

7. REMOVE STEERING KNUCKLE WITH AXLE HUB

- (a) Temporarily install the nut to the lower suspension arm.

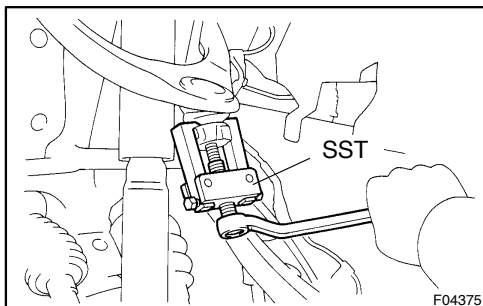
- (b) Support the lower suspension arm with a jack.

- (c) Remove the cotter pin and nut.

Torque: 110 N·m (1,125 kgf·cm, 81 ft·lbf)

HINT:

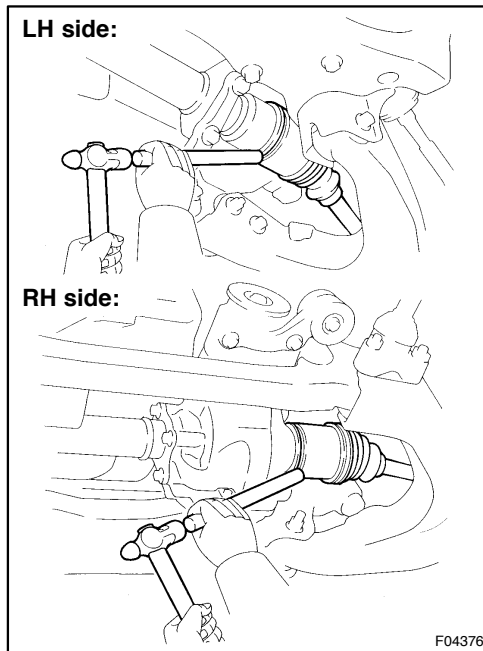
At the time of installation, if the holes for the cotter pin are not aligned, tighten the nut further up to 60°.



- (d) Using SST, disconnect the steering knuckle from the upper suspension arm.

SST 09628-6201 1

- (e) Remove the nut and steering knuckle with axle hub.



8. REMOVE DRIVE SHAFT

(a) Using a brass bar and hammer, remove the drive shaft.

NOTICE:

Be careful not to damage the boot, dust cover and oil seal.

(b) Using a screwdriver, remove the snap ring from the in-board joint tulip.

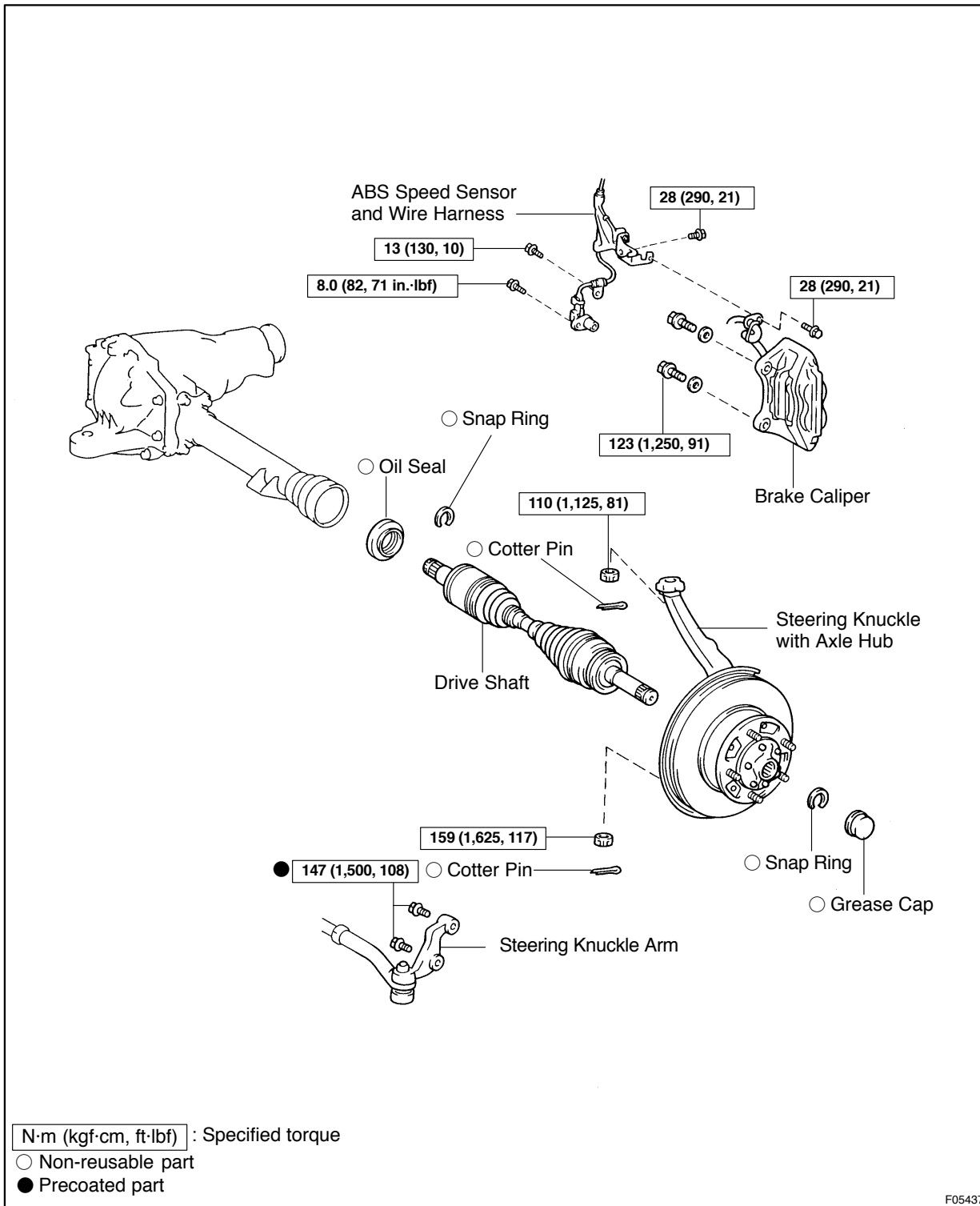
HINT:

At the time of installation, please refer to the following items.

- Coat the oil seal lip with MP grease.
- Before installation, set a new snap ring with opening side facing downward.
- After installation, check that the drive shaft cannot be pulled out by hand.

FRONT DIFFERENTIAL SIDE GEAR SHAFT OIL SEAL COMPONENTS

SA14J-04



F05437